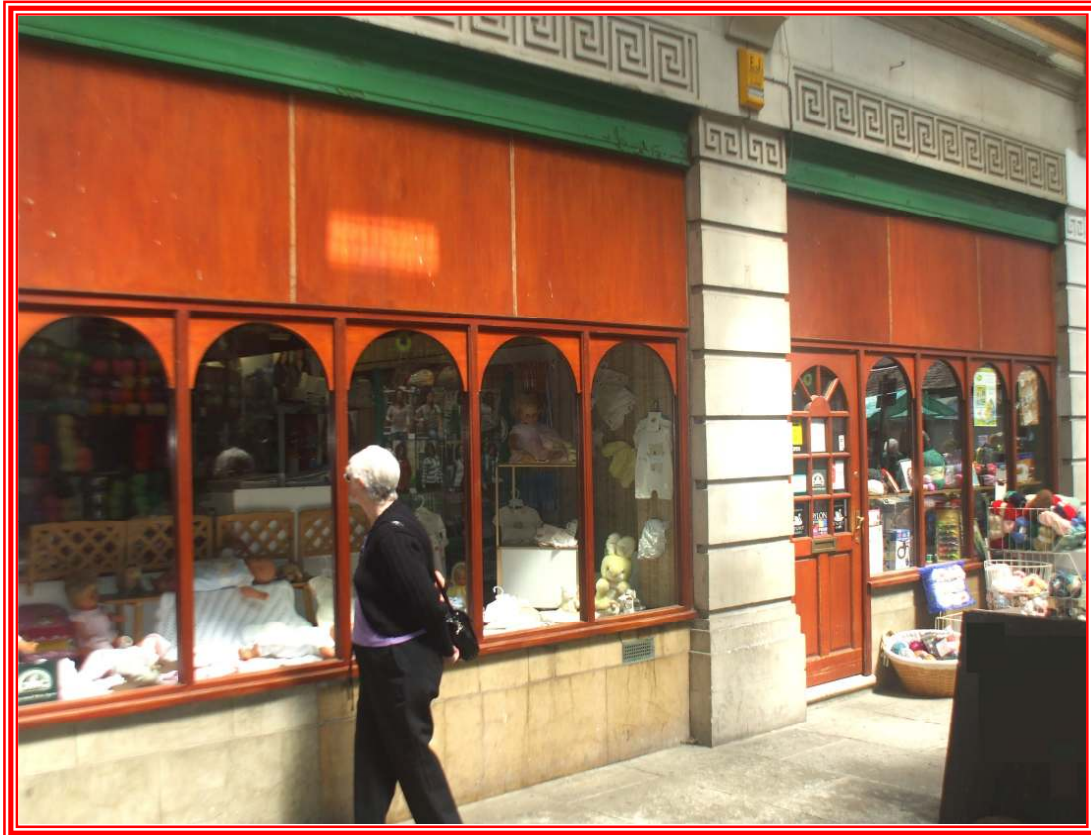


WOOL SHOP & HABERDASHERS
STAFFORDSHIRE
REF: 9227 DE



ASKING PRICE:
LEASEHOLD: £40,000 + SAV

LOCATION

Our client's wool shop and haberdashers is conveniently located in a small covered arcade, next to the open market and main shopping street, which leads to a modern shopping mall and car park in a well known and thriving South Staffordshire town.

The town has good main trunk road links to both the West Midlands and M6/M1. It is on the main railway line to capital and the North West of England and is close to the East Midlands Airport.

THE BUSINESS:

Advent Business Sales are pleased to offer to the market this extremely well established wool and haberdashers shop, which has been trading successfully since 1993.

The current vendor has been in constant ownership since its inception and is reluctantly selling due to family matters.

The origin of the business is a wool shop dealing with knitting and crochet work but over the years, due to customer requests, it has evolved into a complete haberdashery.

The core business still remains with wool, yarns, knitting needles, crochet hooks and patterns and a major part of the shop is devoted to these items.

The extension to the business includes both embroidery and tapestry. The shop also sells a very comprehensive range of buttons in different colours, as well as alternative fixings, ribbons, sewing threads, needles, embroidery and tapestry patterns as well as starter kits for children. Dyes, decorative additions, craft kits, scissors, measuring tapes and other associated items.

Also on offer are 'new born' sized baby clothes, which are in high demand.

All in all, the shop is an Aladdin's cave of items dedicated to hand needle work and is the only one of its kind for many miles.

Customers from Nottingham, Leicester, Northampton and even the West Midlands regularly visit the shop due to its multiplicity of offers and general monopolistic trading in such goods.

The shop is well fitted out for purpose and due to its positioning has high footfall.

Car parking in the area is good and the shop has a good turnover and GP.

The shop is suitably alarmed, only occasionally advertises in knitting magazines, relying more on word of mouth for extension of its customer base.

The business is staffed by the owner full time and 4 part timers as required.

We are advised that stock at cost is approximately £80,000.



This business would be suitable for a husband and wife team with good organisational skills and website abilities.

REF: 9227DE

TRADING HOURS:

Monday & Wed: 9.30am – 4.15pm
Tues: 9.30am – 5pm
Thurs, Fri & Sat: 8.45am – 5pm

FINANCIAL INFORMATION:

We have been advised by the vendor of the following:

Annual sales: £100,000
Gross Profit: 45%

Accounts will be made available to interested parties after a viewing has taken place.

Please let us know if you require finance for the purchase of a business.

BUSINESS PREMISES:

The shop has a large double frontage with window display to left hand side and doorway to right.

Generally, the right hand part of shop is dedicated to haberdashery and new born baby clothes, as well as the serving counter.

At the rear is a small office and a spiral staircase leading to the first floor general stockroom.

A break in the wall halfway down right hand side of shop leads into the wool and knitting side of the business.



At the rear is the staff kitchen and w/c.

External

- Onto paved arcade

TENURE: Leasehold
Original lease: 3 year rolling
Remaining lease:
Review every: 3 years
Rent: £12,500 inc service charge P.A.

We are advised that the annual business rates are currently: £3,850

VIEWING:

Please DO NOT approach the business or its employees without a prior appointment. All appointments are to be made via our office.